

## THANK YOU FOR PURCHASING THE SAWBONES BASIC TRAINING ARTHROSCOPY SHOULDER MODEL

This arthroscopy model may be used for diagnostic and visualization skills including triangulation, and pathology identification. Subacromial decompression, Labrum resection, Bankhart repair, loose body retrieval and some suturing applications may also be performed. With a little care and maintenance your new model should provide you with many years of service.



## COMPONENTS & ANATOMY

### MODELS INCLUDE:

- Soft tissue shoulder
- Glenoid capsule
- Subacromial bursa
- Humeral shaft
- Bone clamp
- C-clamp

### ANATOMICAL STRUCTURE:

- Glenoid labrum
- Biceps tendon
- Superior, middle, and inferior glenoid ligaments
- Subscapular bursa
- Subscapularis tendon
- Rotator cuff tear
- Hills sacks notch
- Subacromial bursa joint and ligament

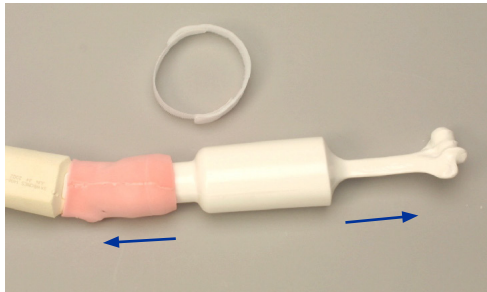
**Note:** Replacement parts available at [www.sawbones.com](http://www.sawbones.com)

## SET-UP INSTRUCTIONS

1. Attach the model to the table with the bone and C-clamp combination as shown.
2. The capsule enclosed within the model must be penetrated with a sharp trochar to gain entry to the joint space.
3. A cannula should also be used.

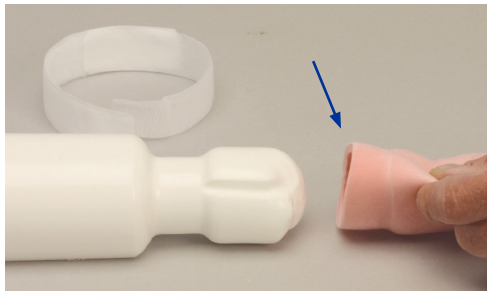


## INSERT REMOVAL & REPLACEMENT



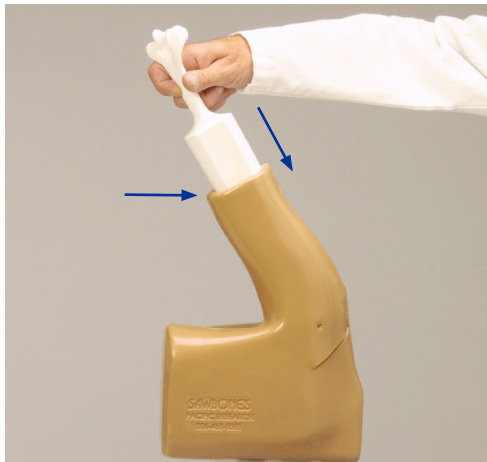
### GLENOID CAPSULE REMOVAL:

1. Grasp the humeral shaft and gently pull it out of the shoulder.
2. Remove the Velcro strip from around the humeral shaft.
3. Remove the glenoid and soft capsule from the humeral shaft.



### GLENOID CAPSULE REPLACEMENT:

1. Grasp biceps tendon with forefingers from outside of capsule.
2. Place humerus down into capsule so that the biceps tendon slides into the intertubercular sulcus.
3. Feel the outside of the capsule to confirm the biceps tendon is positioned correctly.



### CAPSULE/HUMERAL SHAFT INSTALLATION:

1. Replace Velcro strap around capsule and humeral shaft.
2. Orient the flat side of the humeral shaft to the corresponding flatside of the soft tissue.
3. Lower assembly into model until fully seated.



### SUBACROMIAL BURSA REMOVAL:

1. Retract the V-shaped skin flap located on the posterior side.
2. Grasp the insert with fingers and pull out the medial end first.



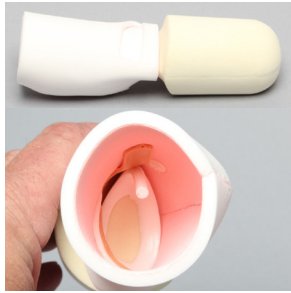
### SUBACROMIAL BURSA REPLACEMENT:

1. Put the lateral section of the subacromial bursa in place.
2. Then snap the medial section into the pre-molded cavity.

## CARE & MAINTENANCE

Your model can be wiped down with any mild cleaner. Use only the dry erase marker on the model. Standard ink can not be removed. Store in a dry, dark place out of direct contact with sunlight.

## REPLACEMENT PARTS ([WWW.SAWBONES.COM](http://WWW.SAWBONES.COM))



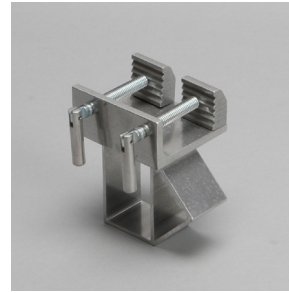
**1408-1**  
Glenoid capsule



**1410-2**  
Subacromial bursa



**1019-7**  
Humeral shaft



**1600**  
Bone clamp



**1601**  
C-clamp